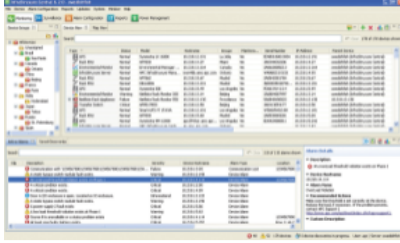


Product datasheet

Specifications

Data Center Expert Standard Appliance

AP9470



Overview

Presentation	StruxureWare Data Center Expert Standard scales up to 2025 devices and 125 surveillance cameras.
Lead time	Usually Ships within 2 Weeks

Main

Number of rack unit	1U
Number of cables	2
Communication port protocol	DNS HTTP HTTPS SMTP SMS SSL TCP/IP
Provided equipment	1 node surveillance license key 25-node license key CD with software Server appliance User manual Installation guide

General

Operating system	Windows 7 Windows 8 Windows Vista Windows XP Windows XP Professional SP1 Windows XP Professional SP2
Memory capacity	2GB/250GB available for data storage

Physical

Colour	Black
Height	4.4 cm
Width	48.3 cm
Depth	48.3 cm
Product weight	9.55 kg
Mounting location	Front
Mounting preference	No preference
Mounting mode	Rack-mounted

Conformance

Product certifications TAA compliance

Environmental

Ambient air temperature for operation 10...35 °C

Operating altitude 0...10000 ft

Relative humidity 5...90 %

Ambient air temperature for storage -35...60 °C

Storage altitude 0.00...9144.00 m

Storage Relative Humidity 5...95 %

Communications & Management

Communication network type RJ45 10/100/1000 Base-T

Packing Units

Unit Type of Package 1 PCE

Number of Units in Package 1 1

Package 1 Height 30.5 cm

Package 1 Width 88.9 cm

Package 1 Length 62.9 cm

Package 1 Weight 19.09 kg

Offer Sustainability

EU RoHS Directive Under investigation

Contractual warranty

Warranty 2 years repair or replace

Recommended replacement(s)